



EN Operating instructions. . . . . page 1  
Original

**Product description**

Inductive proximity switches are sensors that are capable of detecting metal objects without coming into contact with these. When an object is detected, a signal change is returned at the output.



Further technical information can be found in the Schmersal catalogues or in the online catalogue on the Internet: [products.schmersal.com](http://products.schmersal.com).

The Schmersal range of products is not intended for private consumers.

Selection and installation of the switchgear as well as its inclusion in a control system require that the plant manufacturer have qualified knowledge of the relevant legislation and normative requirements.

The user must observe the country-specific installation standards as well as all prevailing safety regulations and accident prevention rules.



**Warning about misuse**  
In case of inadequate or improper use or manipulations of the component, personal hazards or damage to machinery or plant components cannot be excluded.

The information contained in this operating instructions manual is provided without liability and is subject to technical modifications.

**Mounting and electrical connection**



Assembly and the electrical connection may only be carried out by authorised personnel in a de-energised state.

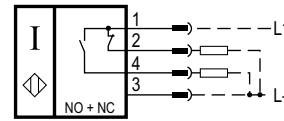
**Permissible tightening torques for proximity switches with thread**

Thread design	Wrench size	Max. tightening torque
M8 x 1	A/F 13	600 Ncm
M12 x 1	A/F 17	1,500 Ncm
M18 x 1	A/F 24	1,800 Ncm
M30 x 1	A/F 36	3,000 Ncm

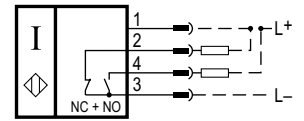
**Contacts**

Versions with integrated connector

PNP

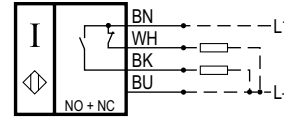


NPN

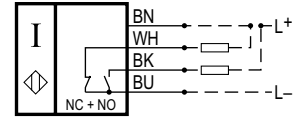


Versions with connecting cable

PNP



NPN



**Maintenance, disassembly and disposal**

We recommend carrying out a visual inspection and functional test at regular intervals.

**Damaged or defective components must be replaced.**

The switchgear may only be removed when de-energised, professionally and in accordance with national rules and regulations.

**K.A. Schmersal GmbH & Co. KG**

Mödinghofe 30, 42279 Wuppertal  
Germany  
Phone: +49 202 6474-0  
Telefax: +49 202 6474-100  
E-Mail: [info@schmersal.com](mailto:info@schmersal.com)  
Internet: [www.schmersal.com](http://www.schmersal.com)

