



EN Operating instructions. page 1
Original

General information

The Schmersal range of products is not intended for private consumers.

Observe country-specific regulations for installation, safety, accident prevention and also rules governing proper disposal.

Technical data

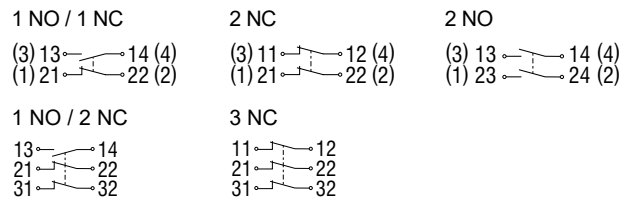
Standards:	EN 60947-5-1
Design according to EN ISO 14119:	1
Degree of protection:	IP65, IP67 to EN 60529
Protection class 332, 335, 355 or 336:	I or II,
Degree of pollution:	3
Ambient temperature:	-30 °C ... +80 °C
Tightening torque:	
- Fixing screws 332, 335 or 336:	2 Nm or 1.2 Nm
- Cover screw 332, 335, 336:	1 Nm
- Screws of the actuating head:	1.5 Nm
- Screw terminals:	0.8 Nm
Cable section:	0.75 ... 2.5 mm ²
Utilisation category AC-15, DC-13 I _e /U _e :	
- Screw terminals 335, 336, 355:	4 A / 240 VAC, 4 A / 24 VDC
- Screw terminals 332:	2,5 A / 240 VAC
- M12 connector, 4-pole 336:	4 A / 240 VAC, 4 A / 24 VDC
- M12 connector, 4-pole 332, 335, 355:	4 A / 50 VAC, 4 A / 24 VDC
Rated impulse withstand voltage U _{imp} :	
- Screw terminals 335, 336, 355:	6 kV
- Screw terminals 332, 335, 355 -03Z, -12Z:	4 kV
- M12 connector, 4-pole 336 or 332, 335, 355:	4 kV or 0.8 kV
Rated insulation voltage U _i :	
- Screw terminals:	250 V
- M12 connector, 4-pole 336, 332 or 335, 355:	250 V or 50 V
Thermal test current I _{the} :	
- Screw terminals 335, 336, 355:	10 A
- Screw terminals 332:	6 A
- M12 connector, 4-pole:	4 A
Max. fuse rating:	6 A gG D-fuse
Required short-circuit current:	1,000 A
B _{10D} NC contact to EN ISO 13849-1:	20,000,000

Further information along with the latest applicable declaration of conformity can be found in the Schmersal catalogues or in the online catalogue on the Internet: products.schmersal.com.

Electrical connection

The electrical connection may only be carried out by authorised personnel in a de-energised condition.

For the cable entry, suitable cable glands with an appropriate degree of protection must be used.
Pin assignment of versions with M12 connector shown in brackets.
All NC contacts have positive break .

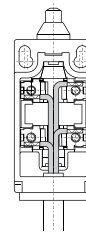


Settle length x of the conductor: 6 mm

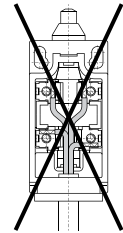


Cable connection

Right



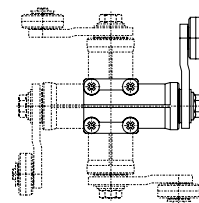
Wrong



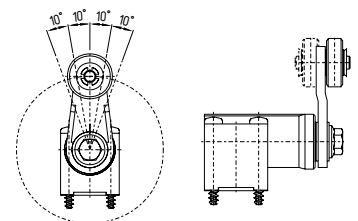
Mounting

The enclosure must not be used as an end stop. Any mounting position. (Dimensions in mm)

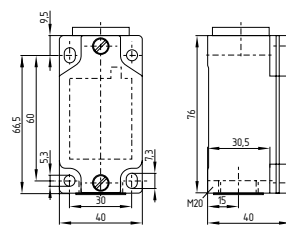
Actuation head adjustable in increments of 90°



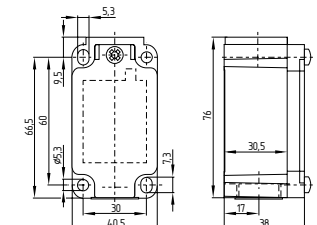
Offset roller lever adjustable in increments of 10°



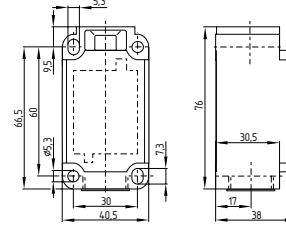
Z 332



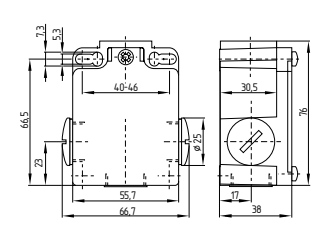
Z/T 335



Z/T 336

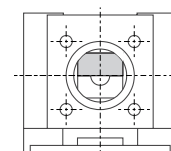


Z/T 355

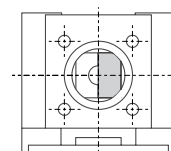


Changing the switching function

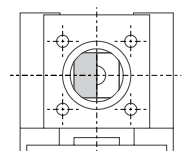
switching in both directions



switching only clockwise



switching only counterclockwise



EN Contact / Manufacturer

The information on the manufacturer and country of origin can be found on the type plate.

K.A. Schmersal GmbH & Co. KG

Mödinghofe 30, 42279 Wuppertal
Germany

Phone: +49 202 6474-0

Fax: +49 202 6474-100

E-Mail: info@schmersal.com

Internet: www.schmersal.com

Schmersal India Private Limited

G-7/1, MIDC, Ranjangaon
Taluka Shirur, Dist. Pune – 412 220

Maharashtra

India

Phone: +91 21 38614700

E-Mail: info-in@schmersal.com

Internet: www.schmersal.in

生产地:

施迈赛工业开关制造(上海)有限公司

上海市青浦区漕盈路3336号

201712中国

电话: +86-21-63 75 82 87

传真: +86-21-69 21 43 98

邮箱: info@schmersal.com.cn

网址: www.schmersal.com.cn